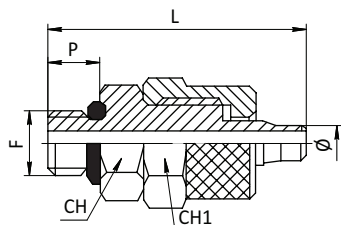


Серия N

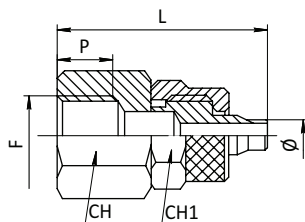
Для изготовления фитингов серии N используется никелированная бронза. Резьбовое соединение уплотнено кольцом из NBR. Рабочее давление до 35 Бар. Данные фитинги могут использоваться с полиэтиленовыми, полиуретановыми и полиамидными трубопроводами.

SF-NPC



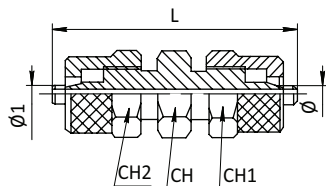
Модель	Ø	F	P	L	CH	CH1	Вес, г
NPC 4/2,7-M5	4/2,7	M5	4	20	8	9	6
NPC 5/3-M5	5/3	M5	4	20,5	8	9	6
NPC 6/4-M5	6/4	M5	4	21,5	8	9	8,5
NPC 4/2,7-G01	4/2,7	G1/8	6	23,5	14	9	12
NPC 6/4-G01	6/4	G1/8	6	25	14	12	15,5
NPC 6/4-G02	6/4	G1/4	8	28	17	12	21,5
NPC 8/6-G01	8/6	G1/8	6	26	14	14	18,5
NPC 8/6-G02	8/6	G1/4	8	29	17	14	24
NPC 8/6-G03	8/6	G3/8	9	30	19	14	31
NPC 10/8-G01	10/8	G1/8	6	27,5	14	16	24,5
NPC 10/8-G02	10/8	G1/4	8	30,5	17	16	30
NPC 10/8-G03	10/8	G3/8	9	32	19	16	35,5
NPC 10/8-G04	10/8	G1/2	10	33,5	24	16	42,5
NPC 12/10-G03	12/10	G3/8	9	32,5	19	19	42,5
NPC 12/10-G04	12/10	G1/2	10	34,5	24	19	42,5

SF-NPCF



Модель	Ø	F	P	L	CH	CH1	Вес, г
NPCF 6/4-G01	6/4	G1/8	8	27	14	12	19
NPCF 6/4-G02	6/4	G1/4	10	30	17	12	22
NPCF 6/4-G03	6/4	G3/8	11,5	32	20	12	32
NPCF 8/6-G01	8/6	G1/8	8	28	14	14	22
NPCF 8/6-G02	8/6	G1/4	10	31	17	14	26,5
NPCF 8/6-G03	8/6	G3/8	11,5	32	20	14	24
NPCF 8/6-G04	8/6	G1/2	12	33	24	24	44,5
NPCF 10/8-G02	10/8	G1/4	10	32,5	17	16	29
NPCF 10/8-G03	10/8	G3/8	11,5	34	20	16	39,5
NPCF 10/8-G04	10/8	G1/2	12	34,5	24	16	49
NPCF 12/10-G03	12/10	G3/8	11,5	35	20	19	43,5
NPCF 12/10-G04	12/10	G1/2	12	35	24	16	57

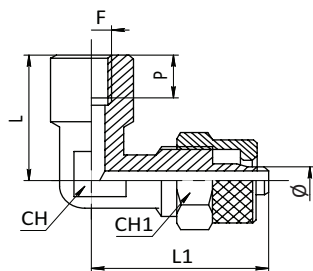
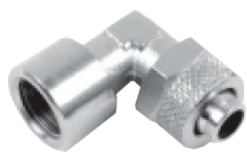
SF-NPU



Модель	Ø	Ø1	L	CH	CH1	CH2	Вес, г
NPU 4/2	4/2	4/2	29	9	9	9	11
NPU 6/4	6/4	6/4	35	12	12	12	22
NPU 8/6	8/6	8/6	37	12	14	14	26
NPU 10/8	10/8	10/8	40	14	16	16	37,5
NPU 12/10	12/10	12/10	38	17	19	19	53
NPU 15/12,5	15/12,5	15/12,5	48	22	24	24	103,5
NPU 18/15	18/15	18/15	48	22	25	25	106
NPU 4/2-6/4	4/2	6/4	32,5	14	14	9	16,5
NPU 6/4-8/6	6/4	8/6	36	12	12	14	24
NPU 6/4-10/8	6/4	10/8	37,5	14	12	16	30
NPU 8/6-10/8	8/6	10/8	38,5	14	14	16	34,5

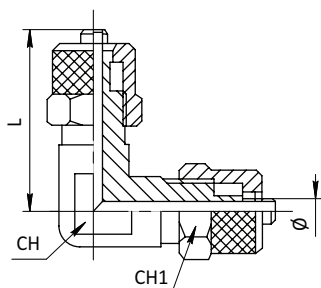
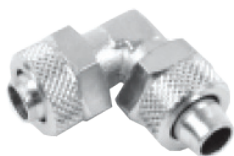
Фитинги с накладной гайкой

SF-NPLF



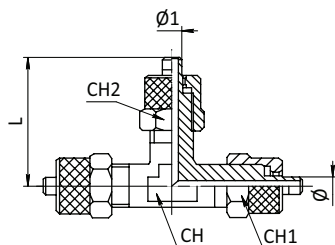
Модель	Ø	F	P	L	L1	CH	CH1	Вес, г
NPLF 6/4-M5	6/4	M5	6	18	22	9	12	18
NPLF 6/4-G01	6/4	G1/8	8	21	23	10	12	25
NPLF 6/4-G02	6/4	G1/4	10	24	24	11	12	30
NPLF 8/6-G01	8/6	G1/8	8	21	23	10	14	26
NPLF 8/6-G02	8/6	G1/4	10	24	26	11	14	27
NPLF 8/6-G03	8/6	G3/8	11,5	29	29	17	14	69
NPLF 10/8-G02	10/8	G1/4	10	24	25	11	16	35,5
NPLF 10/8-G03	10/8	G3/8	11	28,5	29,5	17	16	69
NPLF 12/10-G03	12/10	G3/8	11	29,5	29	17	19	77

SF-NPV



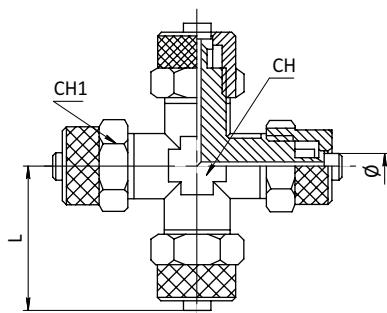
Модель	Ø	L	CH	CH1	Вес, г
NPV 4/2,7	4/2,7	20	9	9	14
NPV 5/3	5/3	18	9	9	15
NPV 6/4	6/4	18,5	9	12	21
NPV 8/6	8/6	22,5	10	14	29
NPV 10/8	10/8	24	11	16	37
NPV 12/10	12/10	27,5	13	19	68
NPV 15/12,5	15/12,5	35	17	24	56
NPV 18/15	18/15	35	17	25	112

SF-NPE



Модель	Ø	Ø1	L	CH	CH1	CH2	Вес, г
NPE 4/2	4/2	-	22	8	9	-	28
NPE 4/2,7	4/2,7	-	22	8	9	-	28
NPE 6/4	6/4	-	22,5	8	12	-	30
NPE 8/6	8/6	-	23	10	14	-	43,5
NPE 10/8	10/8	-	25,5	11	16	-	56,5
NPE 12/10	12/10	-	28,5	11	19	-	84
NPE 15/12,5	15/12,5	-	32	17	24	-	182
NPE 18/15	18/15	-	32	17	25	-	163,5
NPE 8/6-6/4	8/6	6/4	22,5	10	14	12	42
NPE 10/8-6/4	10/8	6/4	25,5	11	16	12	54
NPE 10/8-8/6	10/8	8/6	25,5	11	16	14	56

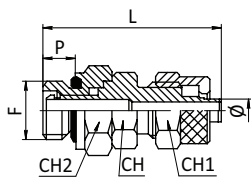
SF-NPZA



Модель	Ø	L	CH	CH1	Вес, г
NPZA 6/4	6/4	22,5	10	12	45,5
NPZA 8/6	8/6	22,5	10	14	52,5
NPZA 10/8	10/8	25,5	10	16	85,5

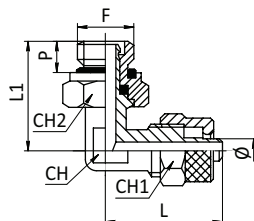
Фитинги с накидной гайкой

SF-NPCO



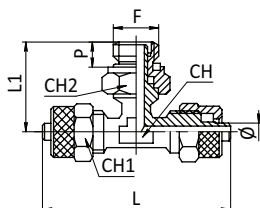
Модель	∅	F	P	L	CH	CH1	CH2	Вес, г
NPCO 6/4-G01	6/4	G1/8	6	33	12	12	14	21
NPCO 6/4-G02	6/4	G1/4	8	35	14	12	17	28
NPCO 6/4-G03	6/4	G3/8	9	35	14	19	19	39
NPCO 8/6-G01	8/6	G1/8	6	34	12	14	14	24,5
NPCO 8/5-G02	8/5	G1/4	8	36	14	14	17	28
NPCO 8/6-G02	8/6	G1/4	8	36	14	14	17	28,5
NPCO 8/6-G03	8/6	G3/8	9	38	14	14	19	27
NPCO 10/6,5-G02	10/6,5	G1/4	8	38	14	16	17	35
NPCO 10/8-G02	10/8	G1/4	8	38	14	16	17	35,5
NPCO 10/8-G03	10/8	G3/8	9	39	17	16	19	46,5
NPCO 12/8-G02	12/8	G1/4	8	38	17	19	17	59
NPCO 12/8-G03	12/8	G3/8	9	40	17	19	19	60
NPCO 12/10-G02	12/10	G1/4	8	38	17	19	17	59,5
NPCO 12/10-G03	12/10	G3/8	9	40	17	19	19	60,5

SF-NPL



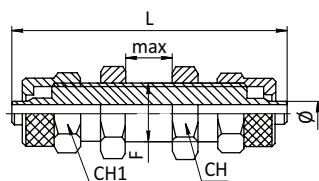
Модель	∅	F	P	L	L1	CH	CH1	CH2	Вес, г
NPL 6/4-G01	6/4	G1/8	6	22	23	9	12	14	21
NPL 6/4-G02	6/4	G1/4	8	24	27	10	12	17	28,5
NPL 6/4-G03	6/4	G3/8	9	24	27	10	12	19	39,5
NPL 8/6-G01	8/6	G1/8	6	24	30	10	14	14	28
NPL 8/6-G02	8/6	G1/4	8	24	30	10	14	17	30
NPL 8/6-G03	8/6	G3/8	9	24	31	10	14	19	41
NPL 10/8-G02	10/8	G1/4	8	26	31	11	16	17	34,5
NPL 10/8-G03	10/8	G3/8	9	26	31	11	16	19	35,5
NPL 12/10-G02	12/10	G1/4	8	28,5	31	13	19	17	63
NPL 12/10-G03	12/10	G3/8	9	28,5	31	13	19	19	75

SF-NPB



Модель	∅	F	P	L	L1	CH	CH1	CH2	Вес, г
NPB 6/4-G01	6/4	G1/8	6	45	24	8	12	14	24,5
NPB 6/4-G02	6/4	G1/4	8	45	27	10	12	17	34
NPB 6/4-G03	6/4	G3/8	9	45	27	10	14	19	45
NPB 8/6-G01	8/6	G1/8	6	45	30	10	14	14	33,5
NPB 8/6-G02	8/6	G1/4	8	45	30	10	14	17	36,5
NPB 8/6-G03	8/6	G3/8	9	45	30	10	14	19	47,5
NPB 10/8-G02	10/8	G1/4	8	51	31	11	16	17	46
NPB 10/8-G03	10/8	G3/8	9	51	31	11	16	19	57

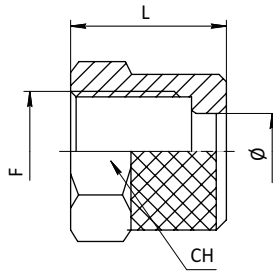
SF-NPM



Модель	∅	F	L	CH	CH1	MAX	Вес, г
NPM 6/4	6/4	M10×1	48	14	12	12	32,5
NPM 8/6	8/6	M12×1	50	17	14	12	46,5
NPM 10/8	10/8	M14×1	51	17	16	10	55
NPM 12/10	12/10	M16×1	52	19	19	10	76
NPM 15/12,5	15/12,5	M20×1	56	24	24	10	124,5
NPM 8/6 6/4	8/6 6/4	M12×1	49,5	17	14	12	50
NPM 10/8 6/4	10/8 6/4	M14×1	49,5	17	16	10	55

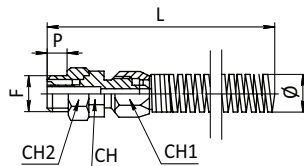
Фитинги с накидной гайкой

SF-Z1703



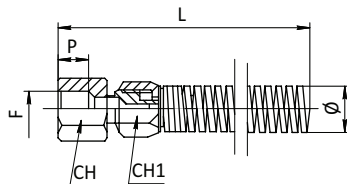
Модель	Ø	F	L	CH	Вес, г
Z1703 4/2	4/2	M7×0,75	9	9	2,5
Z1703 5/3	5/3	M7×0,75	9	9	2,5
Z1703 6/4	6/4	M8×0,75	9	9	2,5
Z1703 6/4(1)	6/4	M10×1	10	12	4,2
Z1703 8/6	8/6	M12×1	11	14	5,5
Z1703 10/8	10/8	M14×1	11,5	16	7
Z1703 12/10	12/10	M16×1	13,5	19	13
Z1703 15/12,5	15/12,5	M20×1	15,5	24	24
Z1703 18/15	18/15	M22×1	15,5	25	19,5
Z1703 24/20	24/20	M27×1,5	16,5	32	41,5

SF-Z1063



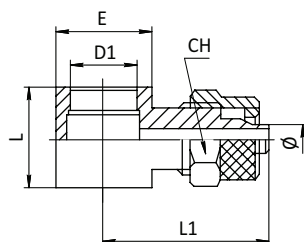
Модель	Ø	F	P	L	CH	CH1	CH2	Вес, г
Z1063 6/4-1/8	6/4	G1/8	6	118	12	12	14	33,5
Z1063 6/4-1/4	6/4	G1/4	8	119	14	12	17	40,5
Z1063 8/6-1/8	8/6	G1/8	6	119	12	14	14	37
Z1063 8/5-1/4	8/5	G1/4	8	120	14	14	17	40
Z1063 8/6-1-4	8/6	G1/4	8	120	14	14	17	40,5
Z1063 8/6-3/8	8/6	G3/8	9	122	14	14	19	39,5
Z1063 10/6,5-1/4	10/6,5	G1/4	8	122	14	16	17	50
Z1063 10/8-1/4	10/8	G1/4	8	122	14	16	17	50,5
Z1063 10/8-3/8	10/8	G3/8	9	124	17	16	19	61,5
Z1063 12/8-1/4	12/8	G1/4	8	123	17	19	17	72,5
Z1063 12/8-3/8	12/8	G3/8	9	125	17	19	19	74,5
Z1063 12/10-1/4	12/10	G1/4	8	123	17	19	17	74
Z1063 12/10-3/8	12/10	G3/8	9	125	17	19	19	75

SF-Z1062



Модель	Ø	F	P	L	CH	CH1	Вес, г
Z1062 6/4-1/8	6/4	G1/8	8	112	14	12	31,5
Z1062 6/4-1/4	6/4	G1/4	10	115	16	12	34,5
Z1062 8/6-1/8	8/6	G1/8	8	113	14	14	34,5
Z1062 8/6-1/4	8/6	G1/4	10	116,5	16	14	39
Z1062 8/6-3/8	8/6	G3/8	11,5	117	19	14	43,5
Z1062 10/8-1/4	10/8	G1/4	10	117,5	16	16	44
Z1062 10/8-3/8	10/8	G3/8	11,5	119,5	19	16	54,5
Z1062 12/10-3/8	12/10	G3/8	11,5	119,5	19	19	58

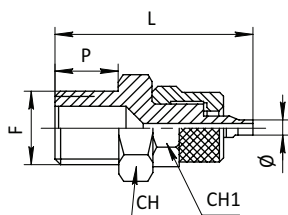
SF-Z1610



Модель	Ø	F	L	L1	CH	D1	E	Вес, г
Z1610 4/2-M5	4/2	M5	9	19,5	9	5,1	9	8
Z1610 5/3-M5	5/3	M5	9	19,5	9	5,1	9	9
Z1610 6/4-M5	6/4	M5	9	19,5	9	5,1	9	7,5
Z1610 6/4-1/8	6/4	G1/8	14,5	24	12	9,9	14	19
Z1610 6/4-1/4	6/4	G1/4	14,5	26	12	13,3	18	25,5
Z1610 8/6-1/8	8/6	G1/8	14,5	24	14	9,9	14	21
Z1610 8/6-1/4	8/6	G1/4	14,5	27	14	13,3	18	27,5
Z1610 8/6-3/8	8/6	G3/8	14,5	27,5	14	16,6	18	29
Z1610 10/8-1/4	10/8	G1/4	14,5	28	16	13,3	18	33
Z1610 10/8-3/8	10/8	G3/8	14,5	29	14	16,6	21	32

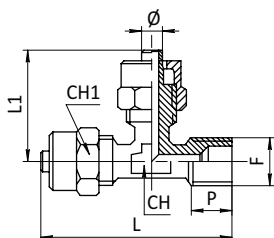
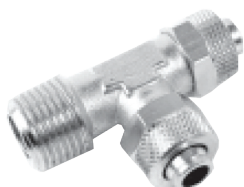
Фитинги с накидной гайкой

SF-NPC



Модель	∅	F	P	L	CH	CH1	Вес, г
NPC 4/2-R01	4/2	R1/8	8	25.5	12	9	11.5
NPC 4/2.7-R01	4/2.7	R1/8	8	25.5	12	9	12.5
NPC 5/3-R01	5/3	R1/8	8	26	12	9	12.5
NPC 6/4-R01	6/4	R1/8	8	27	12	12	14.5
NPC 6/4-R02	6/4	R1/4	11	31	14	12	14
NPC 6/4-R03	6/4	R3/8	11	31	17	12	26
NPC 6/4-R04	6/4	R1/2	14	35	22	12	42
NPC 8/6-R01	8/6	R1/8	8	28	14	14	18.5
NPC 8/6-R02	8/6	R1/4	11	32	14	14	22
NPC 8/6-R03	8/6	R3/8	11	32	17	14	28.5
NPC 8/6-R04	8/6	R1/2	14	36.5	22	14	47
NPC 10/8-R01	10/8	R1/8	8	30	14	16	24.5
NPC 10/8-R02	10/8	R1/4	11	33	14	16	26.5
NPC 10/8-R03	10/8	R3/8	11	33	17	16	32.5
NPC 10/8-R04	10/8	R1/2	14	38	22	16	52
NPC 12/10-R02	12/10	R1/4	11	34	17	19	38
NPC 12/10-R03	12/10	R3/8	11	34	17	19	41
NPC 12/10-R04	12/10	R1/2	14	38	22	19	61
NPC 15/12.5-R04	15/12.5	R1/2	14	41	22	24	75.5
NPC 18/15-R04	18/15	R1/2	14	41	22	25	76.5
NPC 24/20-R04	24/20	R1/2	14	47	27	32	144
NPC 6/4- M12×1	6/4	M12×1	11	31	14	12	18.5
NPC 6/4- M12×1.25	6/4	M12×1.25	11	31	14	12	18.5
NPC 6/4- M12×1.5	6/4	M12×1.5	11	31	14	12	18.5

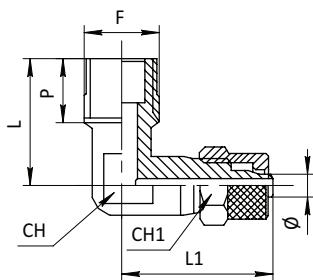
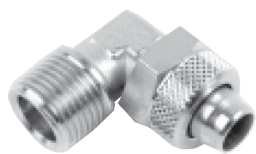
SF-NPD



Модель	∅	F	P	L	L1	CH	CH1	Вес, г
NPD 6/4-R01	6/4	R1/8	8	33	22.5	8	12	24.5
NPD 6/4-R02	6/4	R1/4	11	40	22.5	10	12	33
NPD 8/6-R01	8/6	R1/8	8	32	25	10	14	35
NPD 8/6-R02	8/6	R1/4	11	34	25	10	14	37.5
NPD 8/6-R03	8/6	R3/8	11	48	25	11	14	48
NPD 10/8-R01	10/8	R1/8	8	45.5	25.5	11	16	43.5
NPD 10/8-R02	10/8	R1/4	11	48	25	11	16	37.5
NPD 10/8-R03	10/8	R3/8	11	48	25	11	16	56
NPD 10/8-R04	10/8	R1/2	14	56	28	17	16	95
NPD 12/10-R03	12/10	R3/8	11	50.5	28.5	11	19	70.5
NPD 12/10-R04	12/10	R1/2	14	64	32	17	19	107.5
NPD 15/12.5-R04	15/12.5	R1/2	14	54	35	17	24	152
NPD 18/15-R04	18/15	R1/2	14	58	35	17	25	142.5

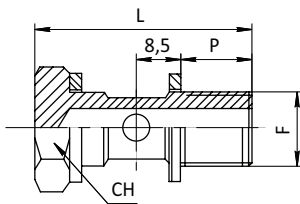
Фитинги с накидной гайкой

■ SF-NPL



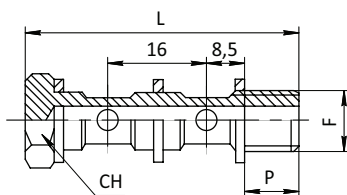
Модель	∅	F	P	L	L1	CH	CH1	Вес, г
NPL 4/2-R01	4/2	R1/8	8	17	20	9	9	14
NPL 4/2.7-R01	4/2.7	R1/8	8	17	20	9	9	13
NPL 5/3-R01	5/3	R1/8	8	17	20	9	9	13.5
NPL 6/4-R01	6/4	R1/8	8	17	22	9	12	17.5
NPL 6/4-R02	6/4	R1/4	11	21	23.5	10	12	25
NPL 6/4-R03	6/4	R3/8	11	22	25.5	11	12	29
NPL 8/6-R01	8/6	R1/8	8	19.5	24	10	14	22.5
NPL 8/6-R02	8/6	R1/4	11	21	24	10	14	26.5
NPL 8/6-R03	8/6	R3/8	11	22	25.5	11	14	31
NPL 8/6-R04	8/6	R1/2	14	29	30	17	14	66
NPL 10/8-R01	10/8	R1/8	8	20.5	25.5	11	16	27
NPL 10/8-R02	10/8	R1/4	11	22	26	11	16	30.5
NPL 10/8-R03	10/8	R3/8	11	22	26	11	16	32.5
NPL 10/8-R04	10/8	R1/2	14	29	30	17	16	66
NPL 12/10-R02	12/10	R1/4	11	24	30	13	19	57
NPL 12/10-R03	12/10	R3/8	11	24	28.5	13	19	57.5
NPL 12/10-R04	12/10	R1/2	14	29	30	17	19	68
NPL 15/12.5-R04	15/12.5	R1/2	14	29	36	17	24	97
NPL 18/15-R04	18/15	R1/2	14	29	36	17	25	86.5
NPL 6/4- M12×1	6/4	M12×1	11	21	23.5	10	12	23
NPL 6/4- M12×1.25	6/4	M12×1.25	11	21	23.5	10	12	23.5
NPL 6/4- M12×1.5	6/4	M12×1.5	11	21	23.5	10	12	23

SF-Z1631



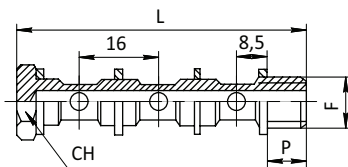
Модель	F	CH	P	L	Вес, г
Z1631 M5	M5	8	4	18	3
Z1631 1/8	G1/8	14	6	28	14
Z1631 1/4	G1/4	17	8	30	24
Z1631 3/8	G3/8	19	8,5	30,5	35
Z1631 1/2	G1/2	24	10	32	49

SF-Z1632



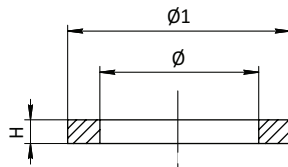
Модель	F	CH	P	L	Вес, г
Z1632 1/8	G1/8	14	6	44	19,5
Z1632 1/4	G1/4	17	8	46	33,4
Z1632 3/8	G3/8	19	8,5	47	52
Z1632 1/2	G1/2	24	10	48	78

SF-Z1633



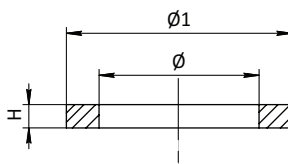
Модель	F	CH	P	L	Вес, г
Z1633 1/8	G1/8	14	6	59	23
Z1633 1/4	G1/4	17	8	61,5	42

SF-Z2651



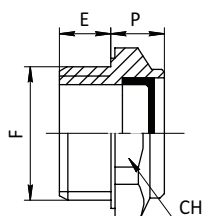
Модель	F	CH	P	L	Вес, г
Z2651 M5	M5	5	9	1	0,1
Z2651 1/8	G1/8	10	14	1,5	0,2
Z2651 1/4	G1/4	13,5	18	1,5	0,4
Z2651 3/8	G3/8	17	22	1,5	0,6
Z2651 1/2	G1/2	21,5	27	1,5	0,8
Z2651 3/4	G3/4	27	33	1,5	1,2

SF-Z2661



Модель	F	CH	P	L	Вес, г
Z2661 M5	M5	5	8	1	0,1
Z2661 M6	M6	6	9	1,5	0,1
Z2661 1/8	1/8	10	14	1,6	0,1
Z2661 1/4	1/4	13	17,5	1,6	0,1
Z2661 3/8	3/8	17	21,5	1,8	0,2
Z2661 1/2	1/2	21	26,5	2	0,4
Z2661 3/4	3/4	27	32	2	0,6
Z2661 1	1	33	41	2,5	0,7

SF-Z1062 - лампа пневматическая



Модель	F	E	P	CH	Вес, г
Z1062 G02	1/4	9	8	17	6,2
Z1062 G03	3/8	10	9	22	10,6
Z1062 G04	1/2	11	9	27	12,4
Z1062 G06	3/4	11	11	32	20
Z1062 G10	1	12	10	40	31,8